

# Pathways to Digital Enablement Survey

Talent and Rewards Breakthroughs Research

February 20, 2019



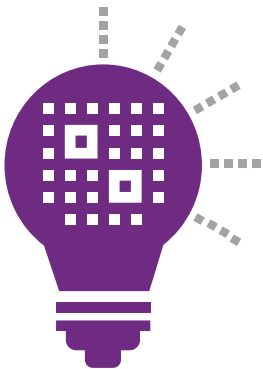
Participate in the **Pathways to Digital Enablement Survey** <[https://willistowerswatson.co1.qualtrics.com/jfe/form/SV\\_0oGaFIQ UXuaQBtH](https://willistowerswatson.co1.qualtrics.com/jfe/form/SV_0oGaFIQ UXuaQBtH)> by Friday, March 29, 2019. This 15-question, **global survey** explores how HR can guide organizations through digital transformation and help unlock new sources of value and talent potential.

Digitalization is disrupting and transforming organizations and talent experiences globally in powerful ways. Technology, automation and constant digital innovation are creating new ways of working, changing behaviors and skills required, and giving way to new practices for rewarding workforces. Are you enabling readiness and success for your organization?

Participation and results are complimentary.

## Top 5 reasons to participate

You'll gain insight into:



**1** How and when to build new digital capabilities.

**2** What new roles, skills, processes and structures are needed.

- 3** How to attract, retain and reward pivotal talent.
- 4** How “being digital” can help you remain competitive.
- 5** New ways of working, new behaviors and changing expectations of leaders.

We are pleased to conduct this survey in collaboration with partner, **Plug and Play** <<https://www.pluginandplaytechcenter.com/>>, an organization that brings together the best start-ups and the world's largest corporations.

The Pathways to Digital Enablement Survey is part of Willis Towers Watson's **Talent and Rewards Breakthroughs** <<https://www.willistowerswatson.com/en/insights/2018/03/talent-and-rewards-breakthroughs-survey-series>> – a research series that explores emerging trends and innovative practices required for human capital programs to remain relevant in transformational times. Resulting insights and findings intend to help organizations uncover ways to enhance the talent experience and business performance. The series includes:

- Pathways to Digital Enablement (fielding now)
- **The Future of Work** <<https://www.willistowerswatson.com/en/insights/2018/02/the-future-of-work-debunking-myths-and-navigating-new-realities>> (results available)
- **Getting Compensation Right** <<https://www.willistowerswatson.com/en/insights/2018/06/2018-getting-compensation-right-survey-global-findings-report>> (results available)
- **Modernizing Total Rewards** <<https://www.willistowerswatson.com/en/insights/2018/10/2018-modernizing-total-rewards-survey-report>> (results available)

## Participating countries (PDE Survey)

### Asia Pacific

Australia  
China  
Hong Kong  
India  
Japan  
Malaysia  
New Zealand  
Philippines  
Singapore  
Taiwan

### Europe, Middle East, Africa

Egypt  
France  
Germany  
Ireland  
Italy  
Netherlands  
Poland  
Saudi Arabia  
Spain  
Switzerland  
Turkey  
United Arab Emirates  
United Kingdom

### Latin America

Argentina  
Brazil

Chile  
Mexico  
**North America**  
Canada  
United States

---

Copyright © 2019 Willis Towers Watson. All rights reserved.